

SYSTEM CONFIGURATIONS

ADVANTAGE POWER+ offers a choice of interchangeable diode hand-pieces allow for multiple system configurations to maximize your treatment options.



D1-800 HANDPIECE

- 10x10 mm spot size
- Fluence up to 100 J/cm²
- Chilled compression tip
- Smaller spot treats smaller areas
- Nearly homogenized beam output



ACTUAL SIZE



ACTUAL SIZE

D1-1064 HANDPIECE

- 10x10 mm spot size
- Fluence up to 100 J/cm²
- Chilled compression tip
- Smaller spot treats smaller areas
- 1064 wavelength ideally suited for darker skin types
 - Provides deeper penetration and clearance of fine hairs



D3-800 HANDPIECE

- 10x30 mm spot size
- Fluences up to 35 J/cm²
- Chilled compression tip
- Large spot treats larger areas
- Homogenized beam output



ACTUAL SIZE

SYSTEM SPECIFICATIONS

| | | | |
|-----------------------|--|---------------------------------------|---|
| Wavelength & Laser | 805 / 1064 nm Diode Laser | Comfort Management | Contact Cooling (3°C) |
| Pulse Widths | D1-800: 5 - 400 ms D1-1064: 5 - 400 ms D3-800: 30 - 400 ms | Peak Power | 2800 W Max |
| Handpiece & Spot Size | D1-800: 10 x 10 mm D1-1064: 10 x 10 mm D3-800: 10 x 30 mm | Display | Touch Screen 8" LCD |
| Fluence | D1-800: 5 to 100 J/cm ² D1-1064: 5 to 100 J/cm ² D3-800: 5 to 35 J/cm ² | Dimensions (Without Optional Cart) | 409(W) x 592(L) x 464(H) mm 16.1(W) x 23.3(L) x 18.3(H) in |
| Repetition Rate | Up to 3 Hz | Weight | 35 kg / 77 lbs |
| | | Accessories | Cradle for treatment convenience |

Lutronic Corporation

Lutronic Center, 219 Sowon-ro, Deogyang-gu, Goyang-si, Gyeonggi-do, KOREA
TEL +82 31 908 3440 / FAX +82 1600 3660
e-mail: office@lutronic.com

Lutronic Inc.

1 North Avenue, Unit C, Burlington, MA 01803, USA
TEL +1 888 588 7644

lutronic.com

©2015 LUTRONIC Group of Companies. All rights reserved. LUTRONIC, its logo, ADVANTAGE POWER+ are trademarks or registered trademarks of the LUTRONIC Group of Companies. This product or the use of this product is covered by one or more US and foreign patents or patent applications pending. ADVANTAGE POWER+ -BR-4100159900 Rev. 1.1

*Specifications are subject to change without notice.
For International Use Only

LUTRONIC

ADVANTAGE POWER+™

Diode Laser Hair Removal

DELIVERING SPEED,
COMFORT AND EFFICACY

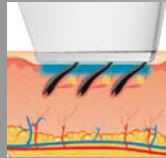


LUTRONIC

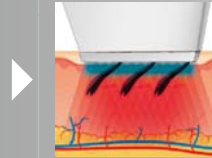
Speed and Results Without Compromise

HOW IT WORKS

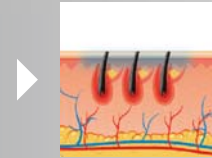
The chilled compression tip continually cools and compresses the epidermis before, during and after the treatment:



Effectively protects epidermis
Allows for increased fluences
Thins the treatment area
Temporarily displaces blood
Enhances patient comfort



Melanin in follicles absorbs
light energy and is converted
to thermal energy



Effectively destroys
hair follicles, stem cells
and dermal papillae



"Treatment is easier and faster than anything I've used before. In my experience it's 50% to 75% faster than Nd:YAG systems, and 30% to 50% faster than other systems using a similar wavelength. I can do an entire back in about 30 minutes, versus an hour or two with other systems. And from what I've seen so far, we are achieving results in two to three treatments that would require at least six treatments with the variety of other lasers I have operated previously. This is due to the adjustable pulse width and the large spot size, which is the largest I have ever used."

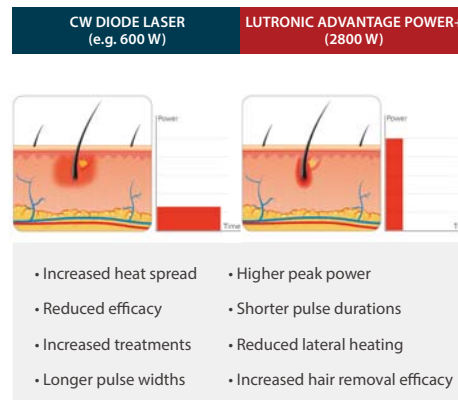
Miranda Mogle, LE, USA

LUTRONIC ADVANTAGE POWER+ is a re-engineered, high energy pulsed diode laser system for hair removal and permanent hair reduction. This is the first laser system to integrate adjustable pulse width control with a large spot chilled compression tip. Built with speed, efficacy and comfort as the foundation, the LUTRONIC ADVANTAGE POWER+ is the cost-effective choice for a dependable laser hair removal system.

TREATMENT ADVANTAGE POWER+

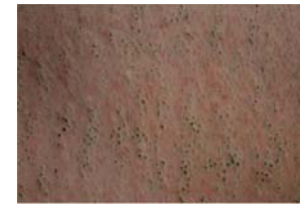
Your clinicians will appreciate the treatment speed of the ADVANTAGE POWER+ system. Using a large spot size at a high repetition rate ensures rapid treatments. The ADVANTAGE POWER+ is up to 40% faster than other systems on the market and can still deliver the promise of high efficacy. This enables your staff to complete treatment regimens quickly and efficiently.

- Efficacious and fast treatments with the 30x10 mm tip with up to 35 joules/cm² fluence
- No consumables for a reliable and cost-effective solution for incredible ROI
- Minimal treatments needed
- FDA Cleared to treat skin types I-V
- Power Pulse Mode delivers improved efficacy with minimal effort
- Portable device fits into the smallest offices
- Additional handpiece cradle provides added convenience



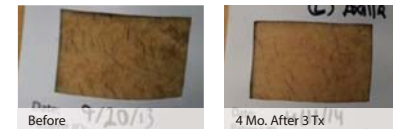
OPTIMIZED HAIR REMOVAL

ADVANTAGE POWER+ offers best-in-class hair removal efficacy, while providing speed needed to ensure profitable patient throughput. ADVANTAGE POWER+ ensures that your hair removal business will become profitable again.



Images Courtesy of Dr. Omar Ibrahim, USA

Outstanding clinical end-point with immediate post treatment edema.



Images Courtesy of Dr. Omar Ibrahim, USA



Images Courtesy of Dr. W S Koh, S. Korea

